

Leviticus 14 Laws of purification and atonement

The Lord spoke to Moses and Aaron and said: *If I inflict a fungous infection upon a house* its owner shall report to the priest. The priest shall *order the house to be cleared* before he goes in to examine the infection, or everything in it will become unclean. *If on inspection* he finds the patch on the walls *consists of greenish or reddish depressions*, he shall put it in quarantine. On the seventh day ... if the patch has spread, he shall *order the infected stones to be pulled out and thrown away outside the city in an unclean place.* ...

If the infection reappears in the house and spreads after the stones have been pulled out and the house scraped and redaubed, the priest shall come and inspect it. *If the infection has spread in the house, ... the house is unclean. The house shall be demolished, stones, timber, and daub, and it shall all be taken away outside the city to an unclean place.* Anyone who has entered the house during the time it has been in quarantine shall be unclean. Anyone who has slept or eaten a meal in the house shall wash his clothes.

But if, when the priest goes into the house and inspects it, he finds that the infection has not spread after the redaubing, then he shall *pronounce the house ritually clean.*

Three Things you can do about mold to assure a healthier home!

Presented by:

Scott Armour, M.S.,
Environmental and
Occupational Health and
Safety



Three Things you can do about mold to assure a healthier home!

WHO IS SCOTT ARMOUR ANYWAY?

- He is a mold expert ... 28 years of unparalleled experience and knowledge! Industrial Hygiene, Research, Public Health, Volunteer to Standards, Author, Presenter & Trainer... more.
- He is the guy who will help you figure out, “*Is Mold a Problem?*” and “*How do I deal with this mold?*”
- *Some people even think of him as a Guru. But not just any guru! A mold assessor in Orange County California who has relied on Scott for knowledge and advice for over 20 years calls him “Yoda of the Mold!”.*

Why Mold? Why Mycotoxins? Why Now?

- Because the awareness of “mold” has never been greater.
- Mycotoxins is something being asked about all over by more and more people every day.
- More people have heard about it, been afraid of it, and have done their own research on it. More myths, snake oils, and bad science are now part of the general knowledge.

Why Mold? Why Mycotoxins? Why Now?

- More companies are selling stuff you don't need.
- Marketing is everywhere on social media.
- Everyone has a blog, insta reels, youtube vids, and a “buy now” page.
- Everyone is claiming they are an expert and only they can save you – ***after*** they scare you and dazzle you. *Even COFFEE is being sold as “mold safe”!*

Why This Presentation? What Can I Teach in Only 45 minutes?

This presentation will touch on topics related to mold such as myths and misinformation about mold, the many health effects associated with mold, mold inspections, sampling, cleaning, mold remediation specifications, and contract writing.

I will discuss how the new standard of care and other guidelines for mold remediation professionals affect not just the mold remediation industry, but also how it assists individuals, like you, who may need mold remediation services.

Why This Presentation? What Can I Teach in Only 45 minutes?

- And because the problem of “Mold” is complex and complicated! It’s not just, “find mold, spray bleach”.

- When you’re done with this whirlwind presentation, you can be confident that whenever anyone tells you some special or scary or magical *thing* about mold, you will know what to ask them next.

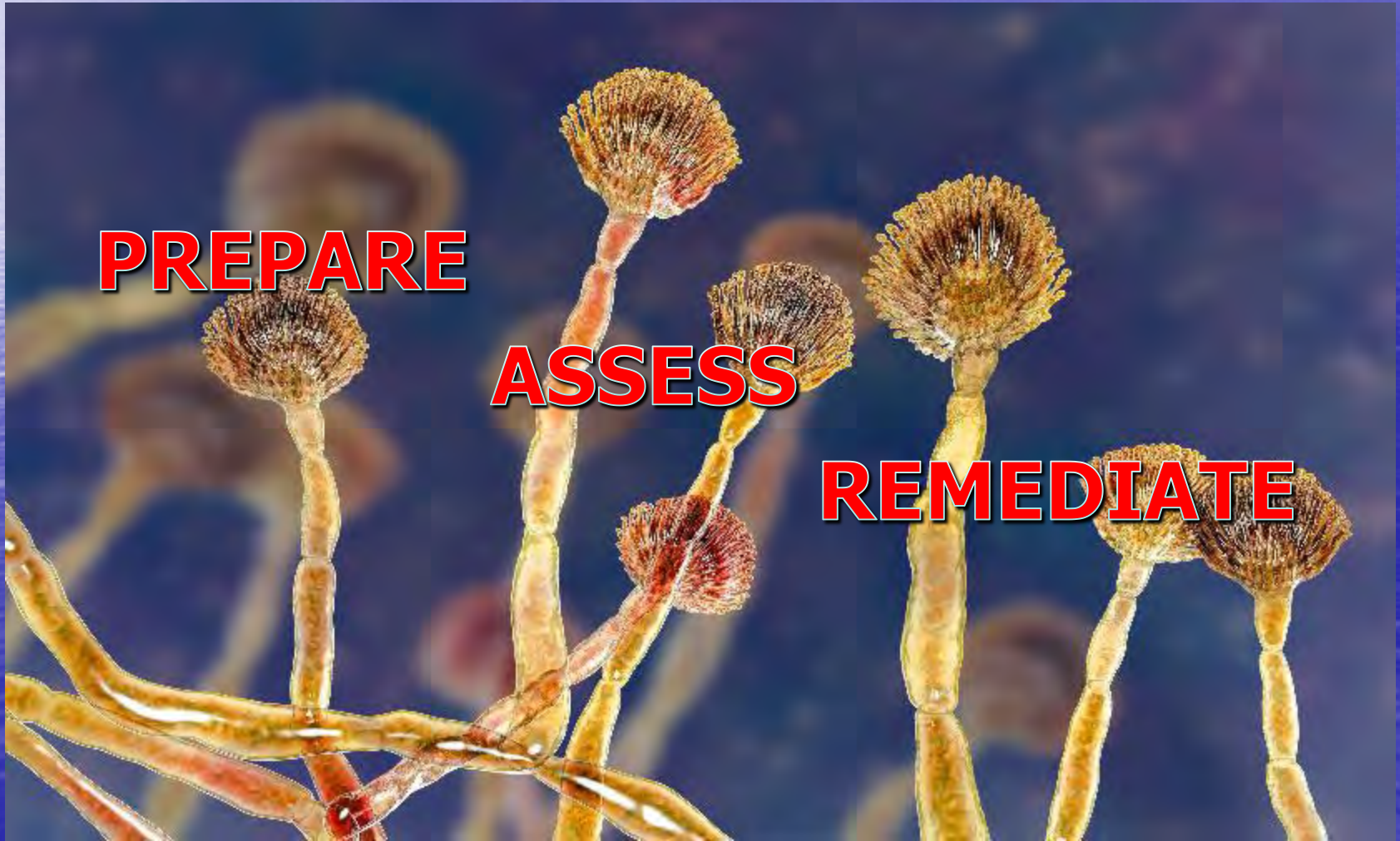


The Three Things to do:

PREPARE

ASSESS

REMEDiate



PREPARE

ASSESS

REMEDiate

*You will always be successful if you answer
"YES" to the question,
"DID I..."*

- Protect Occupants
- Protect Workers
- Protect Environment
- Protect Property
- Protect the Owner



PREPARE

ASSESS

REMEDiate

Know what Questions to Ask! Before you Begin!

- Is a Mold Remediation Company NECESSARY?
- Mold Remediation Contractor? Worker?
- Do I need a Mold Assessment? Samples? Report?
- Do I use a Mold Consultant? Protocol? Spec? Estimate?
- Who designs the Work Plan?
- Do we need a Mold Management Plan?
- Did I *DOCUMENT* EVERYTHING?

PREPARE

ASSESS

REMEDiate

What is Mold? Why Bother?

It's All About Health



PREPARE

ASSESS

REMEDiate

What is Fungi?

Fungus

Mold

Mildew

Rot

PREPARE

ASSESS

REMEDiate

What is Fungi?

Not plant,

Not animal,

Not insect,

Not bacteria,

Not virus...

Has it's very own way
of life!



Descriptions
of some common
microfungi

The background of the slide is a close-up photograph of mold growing on a blue, textured surface. The mold appears as white and light-colored fuzzy patches against the blue background. At the top of the slide, there is a red rectangular border containing the words 'PREPARE', 'ASSESS', and 'REMEDIATE' in white capital letters.

PREPARE

ASSESS

REMEDIATE

Mold —

Any living or dead filamentous fungi and the related fragments or parts, including spores, hyphae, mVOC's, and mycotoxins.

PREPARE

ASSESS

REMEDiate

What does Fungi Look Like?
Take a closer look...

Green, **Black**, **White**,
Brown, **Pink**, **Yellow**...

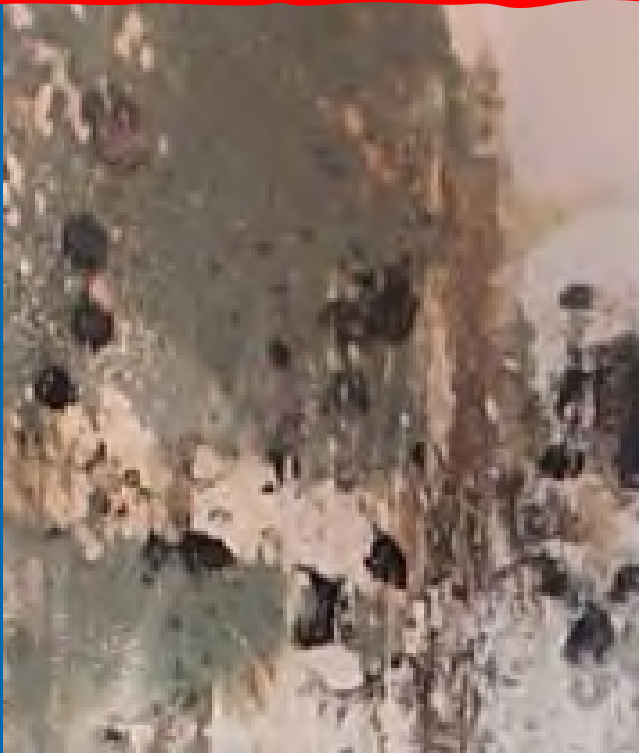
FUZZY, **Velvety**, **Hairy**, ...

Spots, **Stains**, **Streaks**...

PREPARE

ASSESS

REMEDiate



PREPARE

ASSESS

REMEDiate



What does Fungi need to Live?

1. Water:

Must be wet enough long enough!...

High Humidity, Condensation

Chronic or Sudden leaks

Flood or Backup

What does Fungi need to Live?

2. Nutrition,

Organic Material

such as...

Wood, dirt, dust, paper, soap scum



PREPARE

ASSESS

REMEDiate

What does Fungi need to Live?

3. Temperature

70° - 90° F is ideal!

But not necessary.



PREPARE

ASSESS

REMEDIATE

*What does Fungvi need to
Live?*

4. Time:

*Must be Wet enough long
enough!*



About 48-72 hours for some visible –

OR

About 3-4 WEEKS!

It Depends!

Time is of the Essence:



Must be Wet enough long enough!

Should begin to clean immediately!

MORE TIME = MORE MOLD

MORE MOLD = MORE EXPOSURE!!!

MORE EXPOSURE = MORE BAD HEALTH



Where Does Fungi Grow?



PREPARE


ASSESS

REMEDiate

***MAYBE IT IS BETTER TO ASK...
Where Does Fungi NOT Grow?***

SIMPLE:

Where surfaces and materials
are
clean and dry!



The 7 Health Effects of Mold



- ❖ **Pathogenic (infection) NOT from buildings**
- ❖ **Allergenic – seasonal, acute**
- ❖ **Glucans (cell wall molecules) - respiratory**
- ❖ **VOCs – gases in air, CNS effects**
- ❖ **Irritation – particulates/chemicals**
- ❖ **Carcinogenic - RARE! Not from buildings**
- ❖ **Mycotoxins – confusing, unclear, diet?**

PREPARE

ASSESS

REMEDiate

MOLD Health Concerns

Illness

❖ *"The Dose makes the Poíson!"*

❖ Depends on the EXPOSURE

❖ TIME

❖ QUANTITY



PREPARE

ASSESS

REMEDiate

MOLD Health Concerns

Exposure Risk

- ❖ Mold gets in the air
 - ❖ Mold “Dust”
 - ❖ Spores, Hyphae, other parts, toxins
 - ❖ May be “dead” or dry



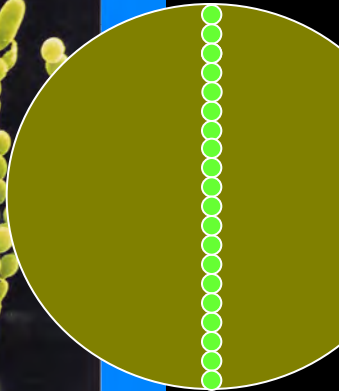
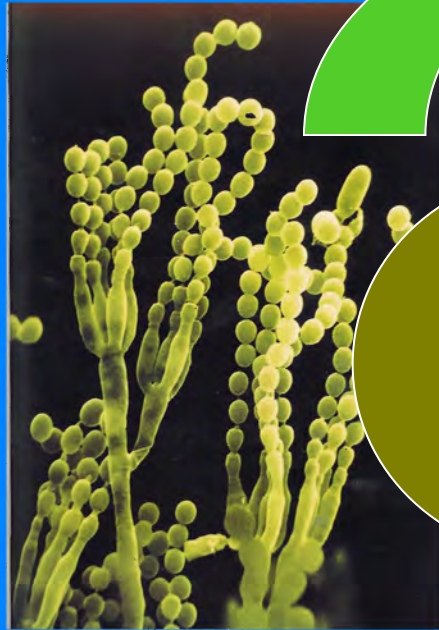
PREPARE

ASSESS

REMEDiate

HOW SMALL IS SMALL?

20 spores
=
Width of
one
human
hair!



REALLY SMALL!



Billions Of Spores!

MOLD Health Concerns



MYCOTOXINS

- *Toxin* is created by fungi
- Acts as poison to cells or body functions

BUT

- EFFECTS NOT UNDERSTOOD
- NO CLEAR DOCUMENTATION!
- SCIENCE HAS NOT PROVEN

MOLD Health Concerns



MYCOTOXINS

NOT a Volatile Organic Compound

NOT an mVOC

NOT act like a gas

Do NOT go thru drywall

ARE cleanable and removable.

MOLD Health Concerns



**Instruct all
individuals
complaining of
any illness to
visit a physician
immediately!**



Fungi Species Related to Serious Health Concerns

Stachybotrys chartarum

Aspergillus versicolor

Aspergillus Fumigatus

Fusarium moniliforme

Penicillium brevicompactum

Penicillium aurantiogriseum

Chaetomium

Memnoniella

NOT PREDICTABLE!

many, many more...

OVER 200,000 SPECIES AND COUNTING

MOLD Health Concerns



How do you Prevent Illness?

- **Avoid the mold!**
- **Do Not breath the spores.**
- **Do Not breath the dust.**
- **Do Not touch it with bare skin.**

MOLD Health Concerns

Any Symptom

Caused by mold – Dead or Alive!

**Will killing it with fungicide or bleach
help prevent illness?**

NO!

- **Dead mold (mold dust) causes allergies too.**
- People are allergic to any part of the mold.
- The toxin does not “die”.

MOLD Health Concerns

Will killing it with fungicide help prevent illness? ***NO!***

SOoooooooooooo,

whatta ya do?

- Should physically REMOVE the mold!
- Prevent EXPOSURE to all parts of the mold growth.

A petri dish containing a brown agar medium with numerous bacterial colonies of various colors (white, black, yellow) and sizes. A red rectangular box with a wavy border is superimposed over the center of the dish.

PREPARE

ASSESS

REMEDiate

If you don't mind, a minute of self-promotion!

**Training and Consulting for all Mold and
Moisture Needs.**

Please see me, or call, 216-225-5237.

Armour Applied Science
440-546-7068

1. ASSESS:

How do you know if there is mold in MY home? How do I even know this is a real problem? How do I know this is a serious problem?

*a. What to expect from the local "Mold Guy"
Vs What to expect from a proper assessment
and inspection*

a. NO sampling needed!

1. ASSESS:

*Consider the credentials – do they matter?
Professional Industrial Hygienist (e.g., CIH) v
“hygienist”, IEP vs Home Inspector, Contractor is the
inspector (not 3rd party), etc*

a. Four Basic Steps to Mold Assessment
No Sampling – not yet.

FOUR BASIS STEPS for ASSESSMENT:

1. Physical inspection of every nook and cranny of the home;
2. Building history review of water intrusion, damage, odors, repairs, rehab, modernization, remodel;
3. Building function/operations assessment; and
4. Occupant health survey.

PREPARE

ASSESS

REMEDiate

Construction
Defect

High
Humidity

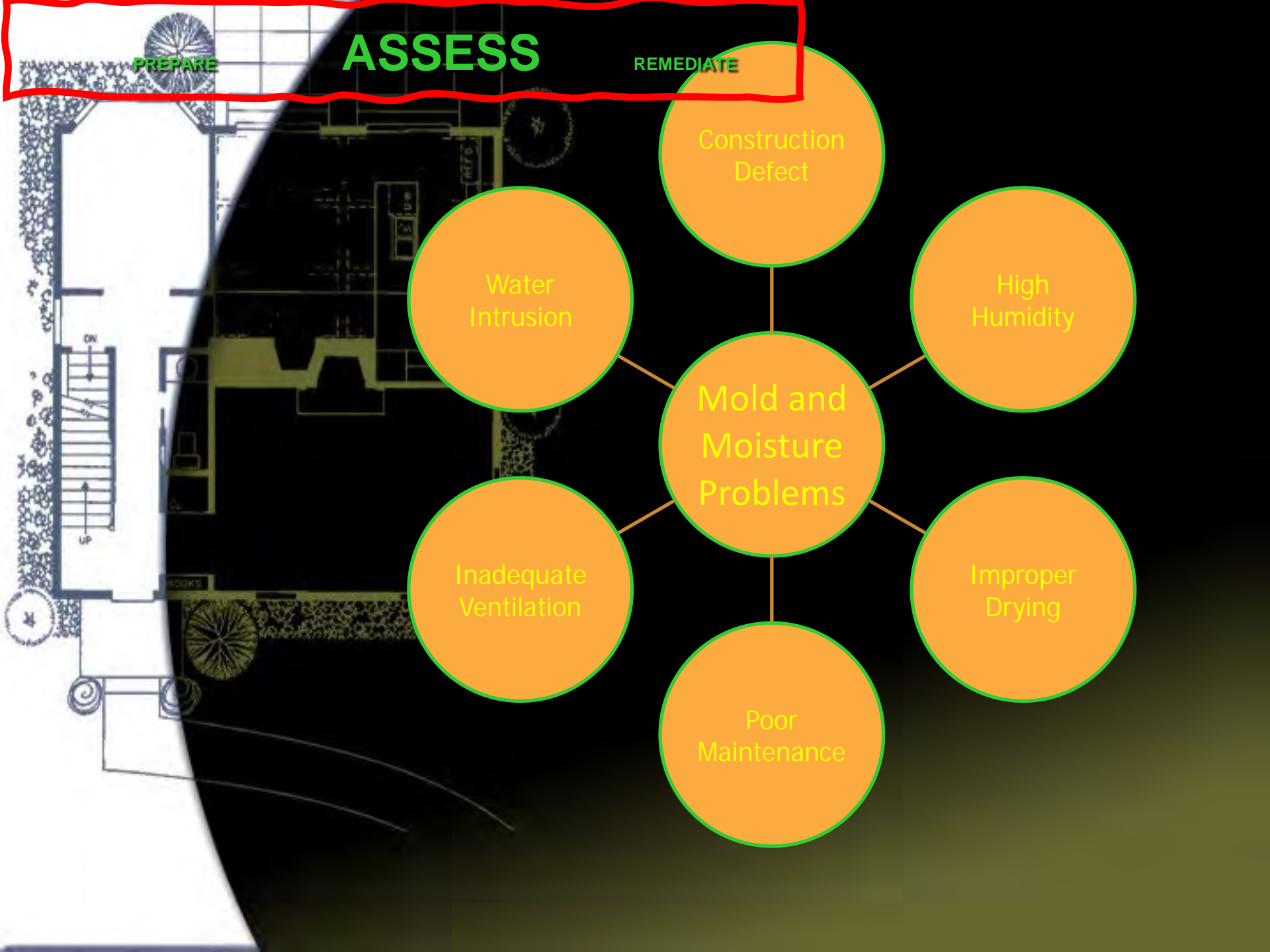
Mold and
Moisture
Problems

Improper
Drying

Poor
Maintenance

Inadequate
Ventilation

Water
Intrusion



The THIRD THING:

REMEDIATION:

Rules and Guidelines

Scope, Specs, and Contracts

Quality Control



PREPARE

ASSESS

REMEDiate

RULE #1

**Follow the
Rules**

PREPARE

ASSESS

REMEDiate

A little History of mold rules and guidelines.

Examples of Non-Binding Rules, Guidelines, Recommendations.

Canada Health – 1995 Stachy only

EPA – 2001 schools & commercial

New York City Health -1995 Stachy only

New York City Health – 2000 all molds

New York City Health – 2008 all molds

OSHA - 1993 (proposal only, dropped in 2001),

OSHA - 2003 Info “Bulletin” only

PLUS:

Contractual
Civil Liability
State Commissions/
Governing Bodies
Policy Language
Corporate
Ethical

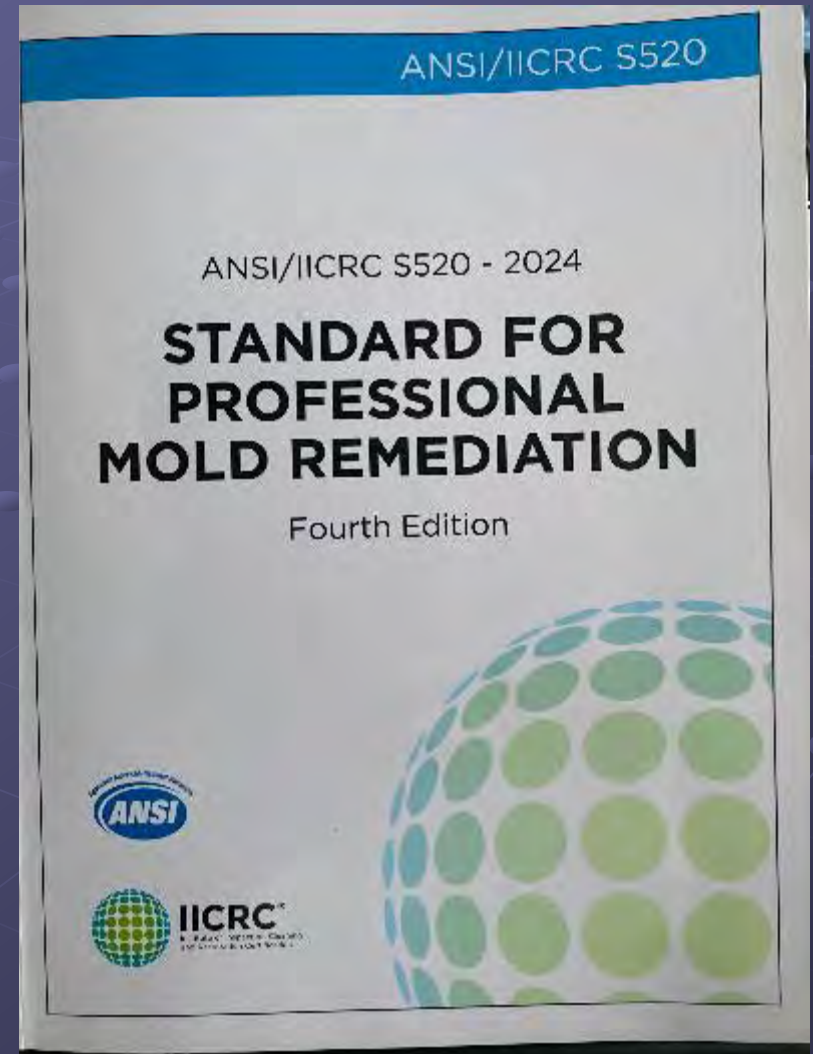
IICRC “S520 Standard and Reference for Professional Mold Remediation”

Written to address
CONTRACTOR concerns.

NOW can reference to remove
MYCOTOXINS.

Reference for detailed procedures
and specs

Means and Methods spec...not
performance.



Per: IICRC S520 Remediation Standard, 2024

Principles of Mold Remediation

- *Safety and Health*
- *Project Documentation*
- *Contaminant Control*
- *Remove! Don't kill.*
- *Contamination Prevention*



Scope of Work, Contracts, Specifications,
and Warranty; Insurance

Know what you should ask for,
pay for, and expect!



Scope of Work, Contracts, Specifications, and Warranty; Insurance

1. Do NOT let the salesperson or contractor tell you what they will do!
2. Work with assessor to develop
3. Use the methods spelled out in the Standard method
4. MAKE the scope MEET the NEEDS of the client/occupant/owner.



PREPARE

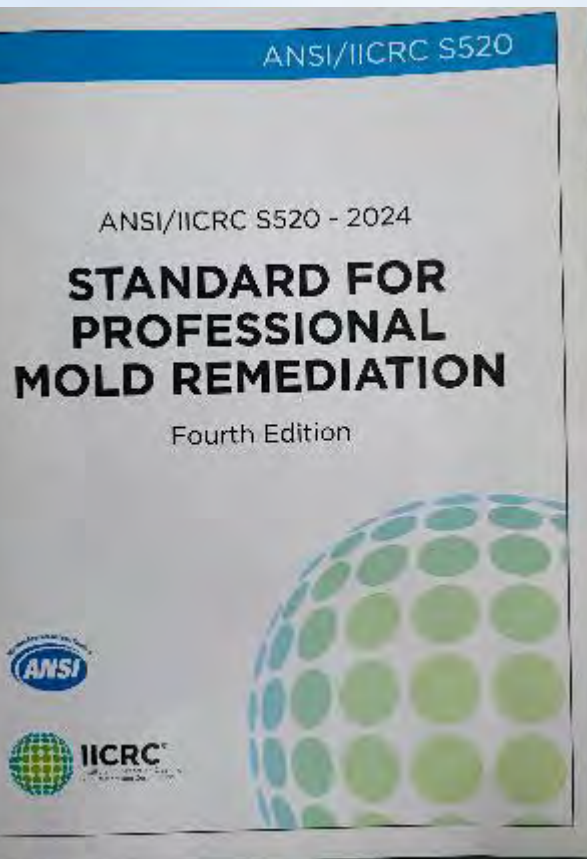
ASSESS

REMEDiate

Scope of Work, Contracts, Specifications,
Warranty, Insurance

Use the methods spelled out in
the Standard method

**#1 ANSI/IICRC S520
Professional Mold
Remediation Standard!**



Use the methods spelled out in the
Standard method

ANSI/IICRC S520 Professional Mold Remediation Standard!

The methods developed with a consensus
from around the world to assure safe, cost-
effective mold removal and remediation.

NEW edition addresses MYCOTOXINS!



Scope of Work, Contracts, Specifications, Warranty, Insurance

Use the methods spelled out in the Standard method
ANSI/IICRC S520 Professional Mold Remediation Standard

The only legally defensible Standard of Care

Not just for contractors! it assists individuals, like you, who need mold remediation services

NOTE: \$\$\$conformance/compliance to S520 can be “billed” to the Ins policy on a line item!



Scope of Work, Contracts, Specifications, and Warranty; Insurance

OTHER ACCEPTABLE REFERENCES for
contract requirements, specs, methods:

ACGIH, AIHA,
EPA, NYC, OSHA,
ASTM, NADCA,



DO NOT USE or permit a contractor to use:
These are NOT consensus and much is incorrect or not science-based.

- NORMI
- Fine Particulate
- Medical Grade
- CIRS literate
- ISEAI
- Fogging, Dry Fog
- Enzyme



STATE of OHIO – NO Rules.

No licensing.

No testing.

No registration.

No certification.

No laws.

No oversight.

Nothing. Nada. Zip.



Scope of Work, Contracts, Specifications, and Warranty; Insurance

Make “conformance to the S520 Standard” a requirement in the contract
- hold them to it!

Warranty – no “around the block”. No
“mold free”. No self-verified.



Scope of Work, Contracts, Specifications, and Warranty; Insurance

#1 thing you MUST REQUIRE

BEFORE you approve a remediation contractor and BEFORE you get a proposal or bid:

- **Pollution Liability Insurance**
 - *The policy MUST include a Mold Endorsement provision.*
- **Properly Insured IS Properly Qualified**

This means the insurance company knows and requires proper Remediation Methods AND Qualifies the company as being competent to be insured.

This means YOU too are protected.



Scope of Work, Contracts, Specifications, and Warranty; Insurance

MINIMUM REQUIREMENTS:

Remove don't kill.

1. Do not denature.
2. Do not deactivate.
3. Do not destroy. (see section 3.a. Specs!)

NO disinfectants! No fungicides, No biocides, no magic oils (see section 3.b. Standard methods!)

3. All Purpose Household Cleaners and Detergents.
Aka “soap and hot water”.



Scope of Work, Contracts, Specifications, and Warranty; Insurance

Consider the OCCUPANTS

exposures, limitations, sensitivities, risk factors,
health issues.

Optional:

PRECAUTIONARY methods:
one step beyond but many dollars more!



Scope of Work, Contracts, Specifications, and Warranty; Insurance

Costs and Estimating: Developing an affordable and applicable Scope of Work

1. develop three basic solutions, good/better/best
2. and their cost points: low/med/high,
3. Might want to include interim controls to reduce or prevent exposure!
4. benefits, pros/cons of each



PREPARE

ASSESS

REMEDiate

Scope of Work, Contracts, Specifications, and Warranty; Insurance

Quality Control – Quality Assurance



Scope of Work, Contracts, Specifications, and Warranty; Insurance

Quality Control

Ongoing: is it documented, photographed?

Are the meeting the contract terms, specs, methods, materials, timing?

Quality Assurance

Final approval.

Job is complete AND Acceptable!

aka Clearance

aka Post Remediation Verification.

How clean is clean enough?



Scope of Work, Contracts, Specifications, and Warranty; Insurance

Quality Assurance

First STEP:

The Contractor *MUST* perform a *Post Remediation EVALUATION*.

This is “in-house”, they are telling you they are finished and have met the contract criteria for performance and completion.

Put it in the contract.

NOT the same as VERIFICATION.



Scope of Work, Contracts, Specifications, and Warranty; Insurance

Quality Assurance

Second STEP:

*Clearance, aka **Post Remediation Verification (PRV)**.*

ONLY a 3rd Party can conduct the PRV.
(otherwise, it is called a contractor “evaluation”)

CRITERIA to PASS:

Agreed upon up front BEFORE job is contracted!



PREPARE

ASSESS

REMEDiate

Scope of Work, Contracts, Specifications, and Warranty; Insurance

Quality Assurance, Clearance, Post Remediation Verification.

CRITERIA TO PASS:

WHITE GLOVE clean! "NO visible dirt, dust, debris, or mold growth, no malodors (including chems), materials are dry".

REFERENCES: ALL THREE MAJOR STDS/GUIDES plus others.



PREPARE

ASSESS

REMEDiate

Scope of Work, Contracts, Specifications, and Warranty; Insurance

Quality Assurance, Clearance, Post Remediation Verification.

*Sampling is UNNECESSARY
in almost ALL SITUATIONS.*

REFERENCE: ALL THREE MAJOR STDS/GUIDES plus a
whole lot more!





**QUALITY
Failure!**

12-20-2001

12-20-2001

MORAL of My STORY:

If you're not prepared,

**you might spend more \$\$\$ than
you could have, or
you might do LESS than
needed, or
you might do nothing at all!**



Conclusion



Our Basic Recommendations:

1. DOCUMENT, DOCUMENT, DOCUMENT.
EVERYTHING!

2. TRAINING, TRAINING, TRAINING.

SEE ME, WE HAVE A CLASS FOR YOUR
ORGANIZATION and NEEDS!.



Our Basic Recommendations:

3. DOCUMENT EVERYTHING. BECAUSE WE MEAN IT – SO DO THE LAWYERS.

4. CALL YOUR LAWYER.



TIME FOR QUESTIONS.

Thank You, HAVE A GREAT DAY!

**Please call.
I am here to help.**

Mold Logic

216-225-5237

Healthyhouse@aol.com



Putting it all together!

Apply the rules of Industrial
Hygiene,
Building Science,
and
Preventive Maintenance!

Putting it all together!

Mold and Moisture Maintenance Planning should include FOUR BASIC IH STEPS

- **ANTICIPATION** *of any health hazard or risk.*
- **SURVEILLANCE** *of conditions.*
- **ANALYSIS** *of the information.*
- **CONTROL** *measures developed.*

Putting it all together!

Mold and Moisture Maintenance Planning

FOUR BASIC IH STEPS

- **ANTICIPATION** of the health risk.

Health info;

Preventive Maintenance!

Putting it all together!

Mold and Moisture Maintenance Planning

FOUR BASIC IH STEPS

● **SURVEILLANCE** of conditions.

Inspection & Sampling

- Moisture source.
- Quantity of mold contamination.



Putting it all together!

IAQ ASSESSMENTS SHOULD INCLUDE
FOUR BASIC *Industrial Hygiene* STEPS

● **ANALYSIS** of the results.
PROFESSIONAL JUDGEMENT

Putting it all together!

IAQ ASSESSMENTS SHOULD INCLUDE
FOUR BASIC *Industrial Hygiene* STEPS

- **CONTROL** *measures* based on
the analysis.

REMEDIATION

Or, more MAINTENANCE!

Anticipation of Hazard or Risk

*Identify Two Major Groups of At-Risk
Individuals* (see ACGIH, EPA)

- **Workers**

- **Occupants**

Anticipation of Hazard or Risk

At-Risk Individuals

(see ACGIH, EPA)

Workers

- Health History before assignment
- Awareness of typical symptoms
- Reporting process

Anticipation of Hazard or Risk

At-Risk Individuals

(see ACGIH, EPA)

Occupants

- Babies
- Elderly
- Pregnant
- Immuno-compromised
- Upper Respiratory

Anticipation of Hazard or Risk

At-Risk Individuals

(see ACGIH, EPA)



Occupants

- Complaint history
- Simple questionnaire before work begins
- Reporting process

Anticipation of Hazard or Risk

Preventive Maintenance

Building History

- Repairs
- Violations
- Damage
- Tenant use patterns

Anticipation of Hazard or Risk

Preventive Maintenance

Planning

- Inspections
- Schedules
- Improvements
- Tenant education

SURVEILLANCE of the suspected hazard.

*Perform A **Visual Inspection***

● **Mold Growth**

- Quantify the area(s) – **HOW BIG?**
- Note the color, odor, growth pattern
- Location(s)

● **Water Intrusion Source**

- Complete Description
- All possible sources

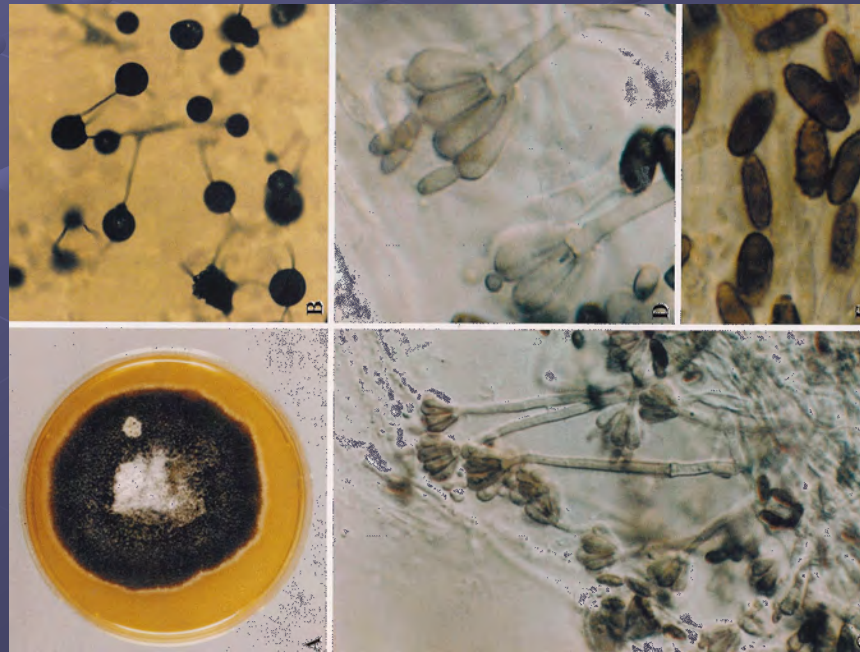
● **Component Damage**

SURVEILLANCE of the suspected hazard.

Sampling

● **Mold Contamination -**

- Quantity of mold— *how much* in Air or in Dust?
- Speciate the mold — *what kind*?



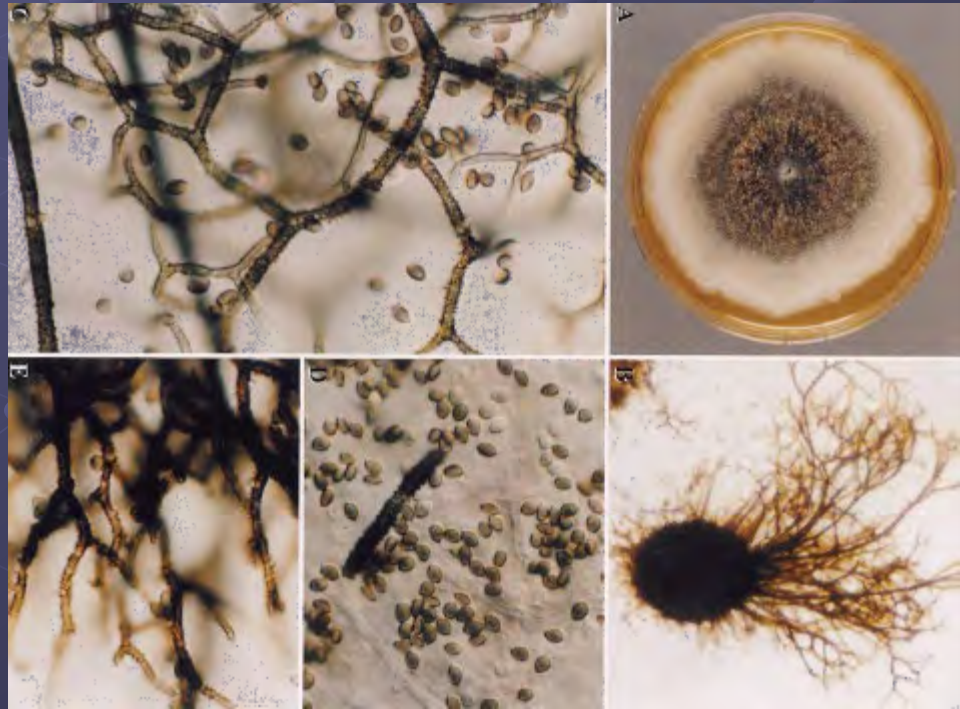
SURVEILLANCE of the suspected hazard.

Sampling Mold Contamination MAY BE **OPTIONAL**

NYC 1 & 2 do not require sampling!

Others recommend sampling only with
Professional Judgment!

*Know why
and what
you are
sampling!*



SURVEILLANCE of the suspected hazard.

Environmental & Structural Data

● **Moisture in Components**

- Use & Know your Equipment
- Moisture Map all suspect areas
- Match the Moisture to the Damage
- Find all possible sources of water

SURVEILLANCE of the suspected hazard.

Environmental & Structural Data

● **Moisture in Air - Psychrometrics**

- Prepare for Drying
- Know how to Dry! See IICRC
- Have Proper Equipment
- Humidity, Temp, Dew Point
- Relative Humidity vs. Grains/Lb

**E.g., 80% RH @ 70F = 63F dew point
or 92 grains per pound**

Control

10 ft² or less

Personal Protective Equipment

(see NYC2000 and EPA2001 Guidelines)

● **Respiratory Protection**

- N95 disposable
 - NOT *respirator*

● **Protective Clothing**

- Gloves, Eye protection

● **Clean-up**

- HEPA vacuum

Control

10 ft² or less

Occupant Protection

(based on EPA and NYC and Professional Judgment)

● **Containment**

- Poly sheeting under work area
- Control dirt/dust/debris with wet misting and HEPA vacuum
- Poly bags/wrap for debris

● **Occupant**

- Not in *work area*

Occupant Protection

(see NYC Guidelines)

● **Containment**

■ OPTION:

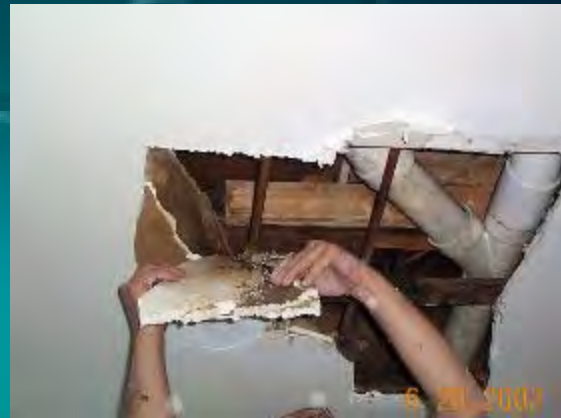
- Control with poly sheeting and duct tape over the contamination.
- Remove the covered component.

Part 4

Mold Maintenance Activities!



THIS



**NOT
THIS !**



Examples of Non-Binding Rules.

Professional Organizations

ACGIH BIOAEROSOLS, 2024 – the “bible” of IAQ

(American Conference of Governmental Industrial Hygienists)

IICRC/ANSI S520 Professional Mold Remediation Standard,

2024 (Institute of Inspection, Restoration, and Cleaning)

AIHA Assessment and Control, aka GREENBOOK, 2021 (American

Industrial Hygiene Association)

Case History #1

Improper Drying

UNKNOWN
CONSTRUCTION
STYLE ALLOWS
TRAPPED WATER TO
REMAIN EVEN AFTER
FLOOD REMEDIATION.

PREPARE

ASSESS

REMEDIATE

UNKNOWN CONSTRUCTION
STYLE ALLOWS TRAPPED WATER
TO REMAIN EVEN AFTER FLOOD
REMEDIATION.



ILLNESS: None.
\$: High
Profile: High

UNKNOWN CONSTRUCTION
STYLE ALLOWS TRAPPED WATER
TO REMAIN EVEN AFTER FLOOD
REMEDATION.



PREPARE

ASSESS

REMEDIATE

Case History #2

Inadequate Ventilation

INADEQUATE
VENTILATION
COMBINED WITH
ADVICE FROM AN
“EXPERT”!

INADEQUATE VENTILATION COMBINED WITH ADVICE FROM AN "EXPERT"!



ILLNESS: None.
\$: Low correction.
\$: High - prevented sale of home.

PREPARE

ASSESS

REMEDiate

Case History #3

Poor Maintenance & Water Intrusion

IMPROPER BUILDING
MANAGEMENT AND
“CHEAP” FIXES LEAVE
BUILDING WITH
MAJOR REPAIR
NEEDS.

IMPROPER BUILDING MANAGEMENT AND “CHEAP” FIXES LEAVE BUILDING WITH MAJOR REPAIR NEEDS.



IMPROPER BUILDING MANAGEMENT AND “CHEAP” FIXES LEAVE BUILDING WITH MAJOR REPAIR NEEDS.



ILLNESS: NONE
\$: Moderate.
Profile: V. HIGH

PREPARE

ASSESS

REMEDiate

Case History #4

Poor Maintenance

OWNER OVERSIGHT
AND INATTENTION
TO WATER LEAKS –
NO COVERAGE!

OWNER OVERSIGHT AND INATTENTION TO WATER LEAKS – NO COVERAGE!



ILLNESS: Allergies, 5 children, mother, father
\$: moderate, coverage denied.

PREPARE

ASSESS

REMEDiate

Case History #5

Construction

Defect

SLAB HOUSE WITH
HVAC DUCTS IN
SLAB PLUS HIGH
WATER TABLE

SLAB HOUSE WITH HVAC
DUCTS IN SLAB
PLUS HIGH WATER TABLE



ILLNESS:

Very Serious Asthma:
Mother, one son

\$: Unknown - High

PREPARE

ASSESS

REMEDIATE

Where's The Mold?



Where's the Mold?



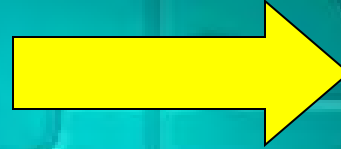
Where's the Mold?



QUIZ: Where's the Mold?



Where?



Where?



How much is Too Much?



QUIZ: What Kind?





QUIZ: Where?



Where?



But, down below...
more mold



Where's the Mold?

and more mold next to it!



Where?



**And finally, a total of
Twelve 2-Bedroom units!!!**



REACT!

Do Something, Now.

Colin Powell:

"I react when I'm 40-60% sure.

If I'm less than 40% I need more info.

If I am more than 60%, I waited too long!

Conclusion



Our Basic Recommendations:

1. DOCUMENT, DOCUMENT, DOCUMENT.
EVERYTHING!

2. TRAINING, TRAINING, TRAINING.

SEE ME, WE HAVE A CLASS FOR YOUR
ORGANIZATION and NEEDS!.

Our Basic Recommendations:

3. DOCUMENT EVERYTHING. BECAUSE WE MEAN IT – SO DO THE LAWYERS.

4. CALL YOUR LAWYER.

TIME FOR QUESTIONS.

**Thank You,
HAVE A GREAT DAY!**

Please call.

I am here to help.

Mold Logic

216-225-5237

Healthyhouse@aol.com